

NORTHWEST INCIDENT MANAGEMENT TEAM 12

Craig Glazier, Bob Shindelar - Incident Commanders

July 14, 2019

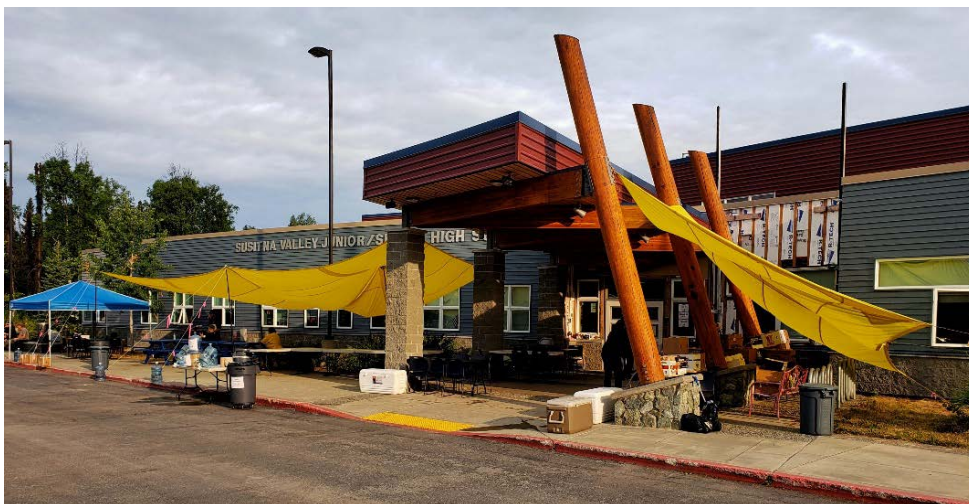
MONTANA CREEK AND MALASPINA FIRES UPDATE

The Montana Creek and Malaspina Fires remain at 367 and 85 acres, respectively, and are 60% and 50% contained. Little smoke was detected from either fire on Saturday. Given the current situation, the operation is down-sizing and NW Team 12 will turn management of the incident over to the Alaska Division of Forestry and begin traveling towards home Tuesday.

Two crews, four engines, one water tender and one helicopter will remain on the incident, continuing to monitor, mop up and begin fire suppression repair. The temporary flight restriction over the fire areas has been lifted.

Team 12 considers it a privilege and an honor to have had the opportunity to serve alongside the dedicated members of your community, borough and state agencies. Thank you for your generous welcome and a memorable assignment.

This will be the last daily update on this incident.



Smoke Information: <https://fire.ak.blm.gov/predsvcs/airquality.php>

Burn Restrictions:

<http://dnr.alaska.gov/commis/pic/releases/7919ParksForestryextendbanoncampfiresinInteriorSouthcentral.pdf>



RESOURCES

Montana Creek and Malaspina Fires

SIZE: 367 ACRES AND 85 ACRES

CONTAINMENT: 60% AND 50%

PERSONNEL: 208

CAUSE: BOTH UNDETERMINED

RESOURCES

4 - 20 PERSON HAND CREWS

3 - WATER TENDERS

4 - ENGINES

AIRCRAFT

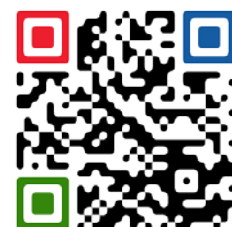
1 TYPE 3 HELICOPTER

Evacuation levels

All evacuation levels in the areas of the Montana Creek and Malaspina Fires are set at

Level 1 – “Ready”

[Find the map here](#), and on Inciweb under the maps tab.



Fire Information (208)329-8331

Email: 2019_akmss_montanacreek@firenet.gov

Inciweb: <https://inciweb.nwcg.gov/incident/6424/>

Alaska Fire Info: www.akfireinfo.com

Facebook: [@AK.Forestry](#) and [@MatSuBorough](#)