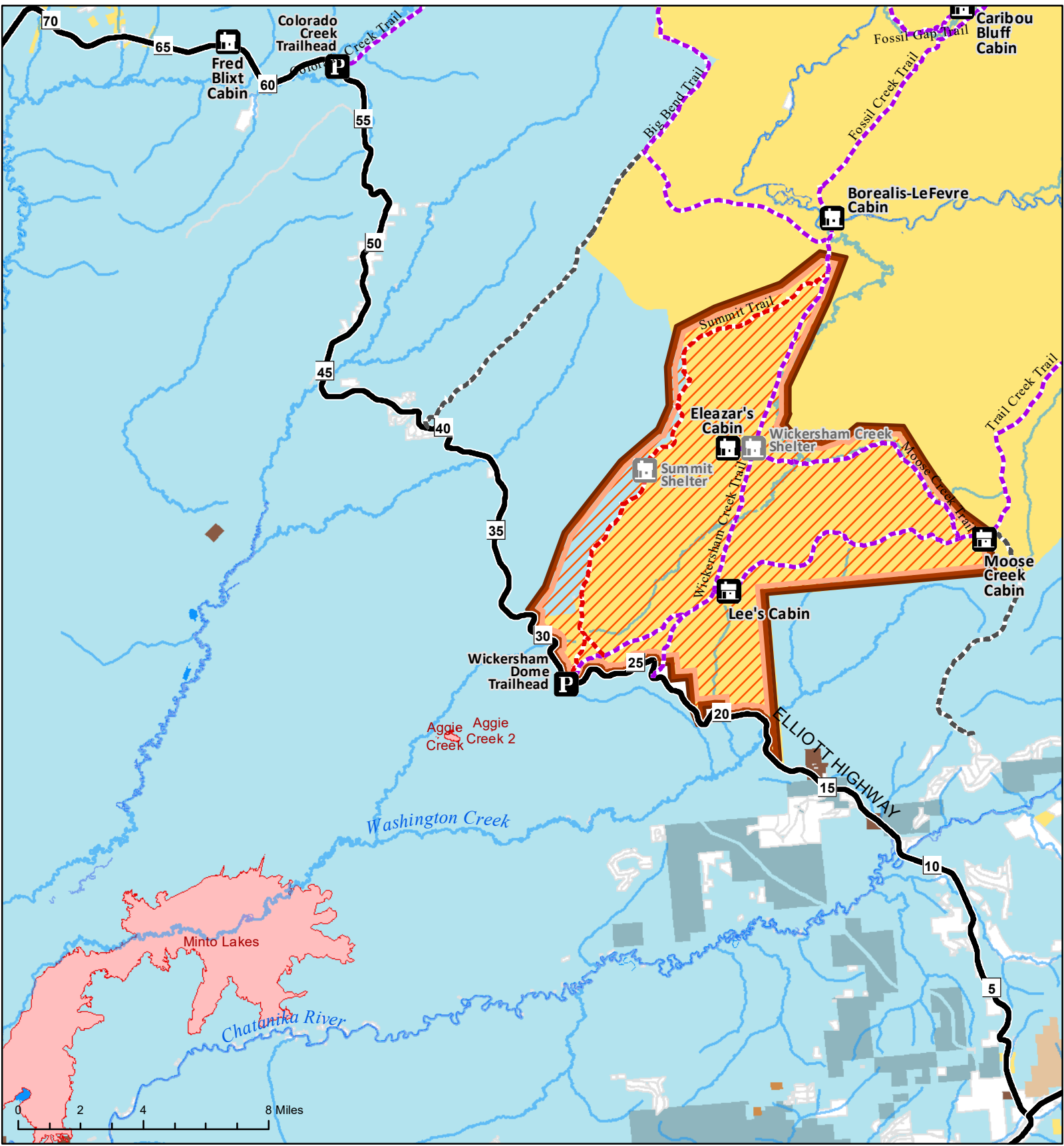




Fire Closure Order Area - 6/30/2022

U.S. DEPARTMENT OF THE INTERIOR | BUREAU OF LAND MANAGEMENT | ALASKA



	Fire Closure Area		Non-Motorized Trail		Bureau of Land Management		Native Allotment
	Fire Perimeter (as of 6/30)		Trail		Other Federal		Native Lands
	Parking Area		Non-BLM Trail		State		Private
	Cabin		Highway		Local Government		Water

Disclaimer: No warranty is made by the Bureau of Land Management as to the accuracy, reliability, or completeness of these data for individual or aggregate use with other data. Original data were compiled from various sources. This information may not meet National Map Accuracy Standards. This product was developed through digital means and may be updated without notification. The information displayed on this map should be used for graphic display only. For official land status information, refer to Cadastral Survey plats, Master Title Plats, and land status case-files.

Fairbanks
Anchorage
Juneau

6/30/2022